

# An Analysis of Incidents for DWDA Area.

## Description

This report investigates incidents recorded in Niche & Storm for the DWDA area.

The analysis is split into 2 sections:-

- Incidents that specifically mention Alcohol (2021-22 vs 2022-23)
- Other incidents (2022-23):-
  - Violence S20/S47
  - Sexual Offences
  - Robbery/Theft
  - Criminal Damage
  - ASB (Personal; Nuisance; Environmental)

The analysis also looks at these location types:-

- Accom
- Air/Rail
- Business
- Licensed
- Non-Addr
- Street

## Findings

### **Alcohol Related incidents 2021-22 vs 2023**

The locations for incidents are similar as are the numbers, while street related incidents have improved slightly there has been little change for licensed premises.

A relationship between the location of Licensed premises and the number of incidents can be seen on the heat maps and Licensed premises locations map.

### **All Incidents**

When combined these mostly occur in the Street with Licensed premises the second most likely location. This is also seen with ASB and Criminal Damage.

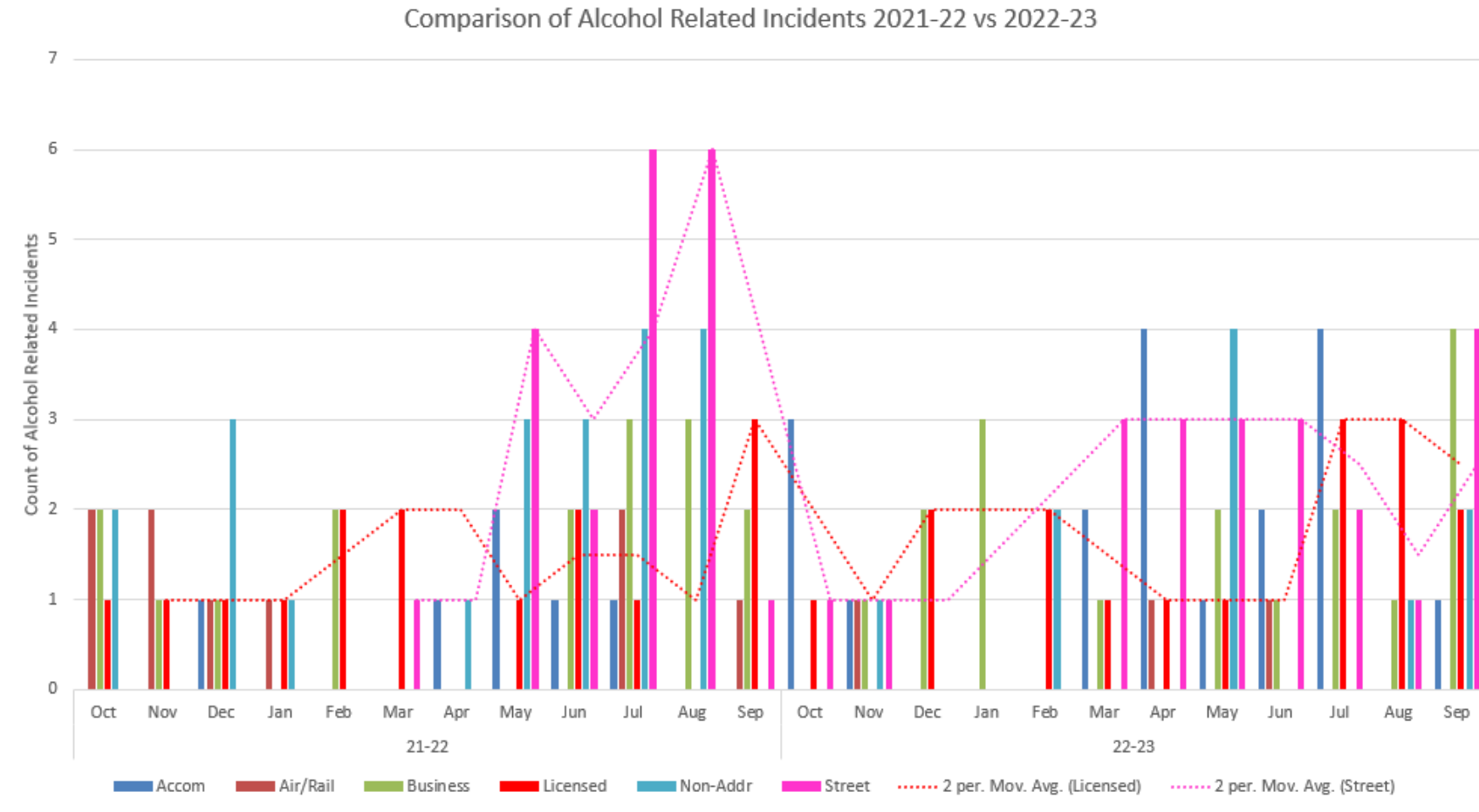
For Violence(S20/47) this is mostly seen in Licensed premise and slightly less in the streets.

There were more Sexual Offences in licensed premises than other locations – however the numbers were small so this may not be significant.

The street location may be related to licensed premises as incidents may ‘spill’ from the premises to the street.

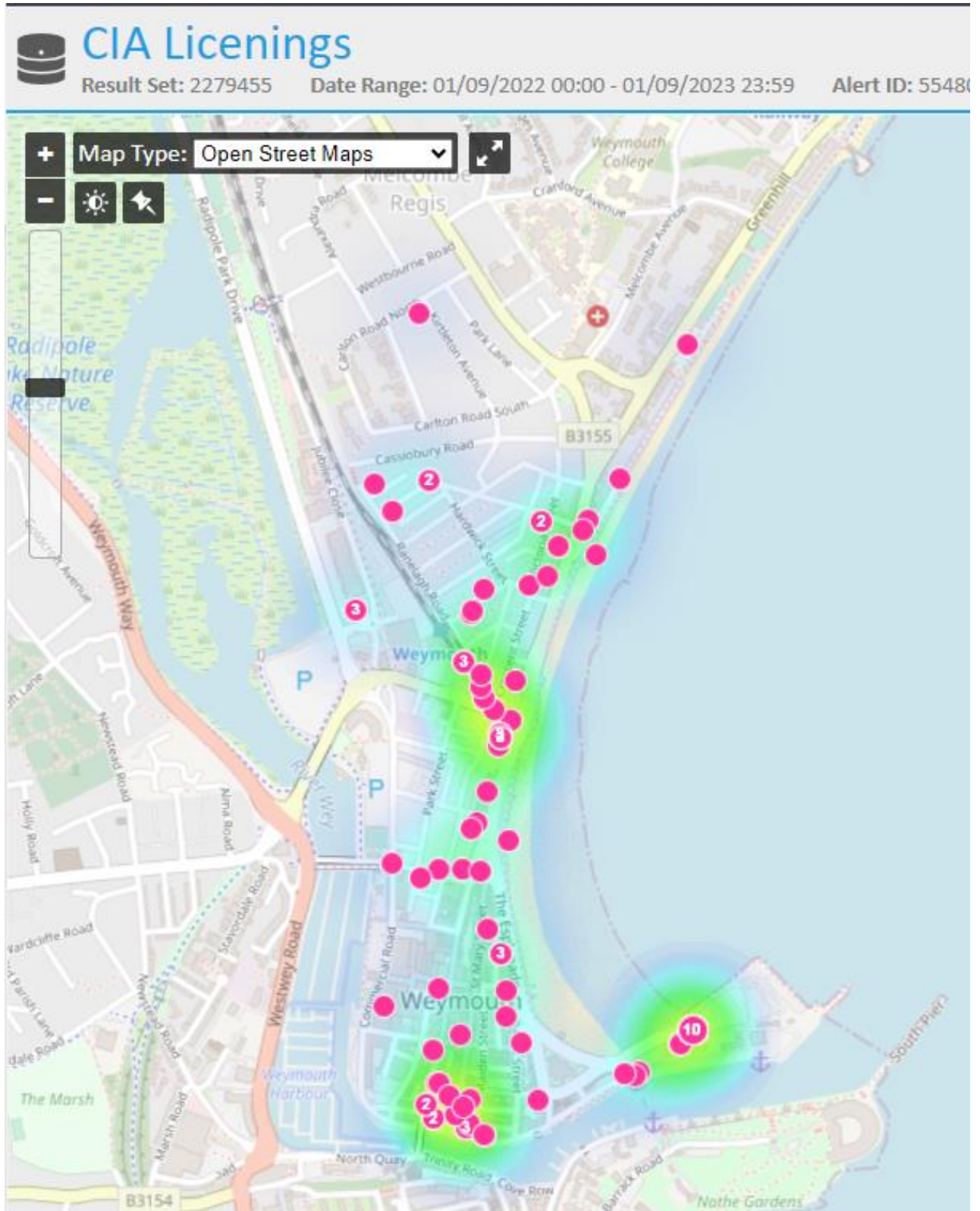
### Alcohol Specific Data 2021/22 vs 2022/23.

The data was further searched for specific alcohol related incidents – where ‘drink’; ‘drunk’; ‘alcohol’ & ‘intox’ were searched for in Incident details and comments. **\*NOTE** the incidents returned depends on how they were recorded in the system – this data set is probably incomplete but will indicate trends.

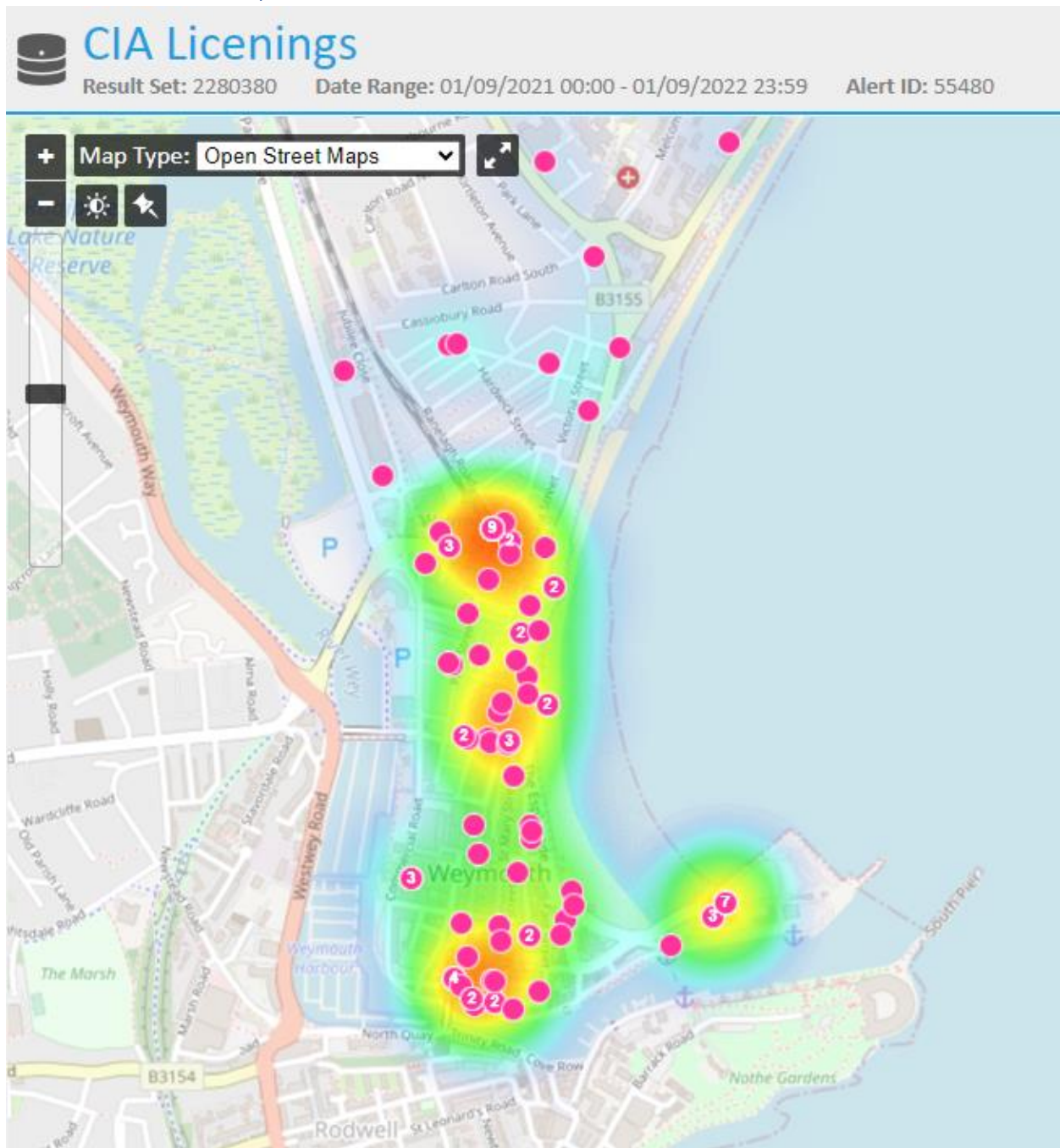


The chart shows the general rise in alcohol related incidents during the summer (Street; Acco & Non-Addr) across both this and last year. However, there was a drop in incidents located in the street for this summer, but this was not seen for incidents in Licensed premises which has stayed fairly steady.

Locations Heat Map – Alcohol Mentioned 2022/23



## Locations Heat Map – Alcohol Mentioned 2021/22



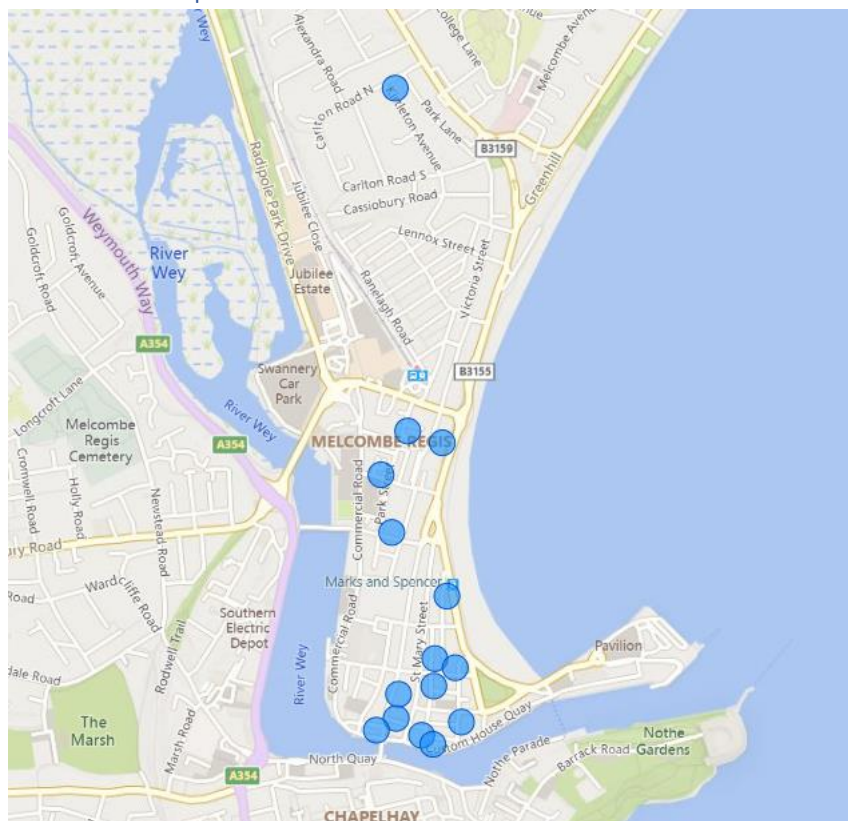
These 2 heat maps show very similar locations for alcohol related incidents over both years and when this is compared with the Licensed premises locations, in the next section the 'hot' areas on both heat maps correlates quite strongly with the licensed premises locations.



## Alcohol Incident Count table for Licensed Named Premises by Year

Name	Post Code	Incident Count	
		21-22	22-23
Ship Inn	DT4 8BE		1
Finns	Westham Rd DT4 8NU	1	1
Golden Lion	St Edmund St DT4 8AR		1
Rafa Wings Club	Maiden St DT4 8AY		1
Rendezvous	St Thomas St DT4 8AW		2
The Closet	Maiden St DT4 8BA		1
The Cutter Hotel	East St DT4 8BP		1
The George Inn	Custom House Quay DT4 8BE	1	2
The Nook	The Esplanade DT4 8DG	1	3
The Swan Inn	St Thomas St DT4 8EH	1	2
Weatherbury Hotel	Carlton Rd DT4 7PX		1
Actors Bar And Club	Maiden St DT4 8BB	1	
Royal Oak	Custom House Quay DT4 8BE	2	
Duke Of Albany	Park St DT4 7DE	1	
The Lazy Lizard	The Esplanade DT4 8DG	1	
The Star	Gloucester St DT4 7AW	1	
The Gloucester	The Esplanade DT4 7AT	1	
Globe Hotel	East St DT4 8BN	1	

## Locations Map



## All incident data for DWDA

This section looks at a range of incidents for DWDA area for the time period Sept 22 – Sept 23. The charts have been broken down into incident Disposal Code type (when reported):-

- Violence S20/More Serious
- Violence S47/Less Serious
- Sexual Offences
- Robbery
- Theft
- Drugs
- Personal (ASB)
- Nuisance (ASB)
- Environmental (ASB)
- Criminal Damage

Not all these incidents will be related to licensed premises but indicate the general level of crime & ASB in the area.

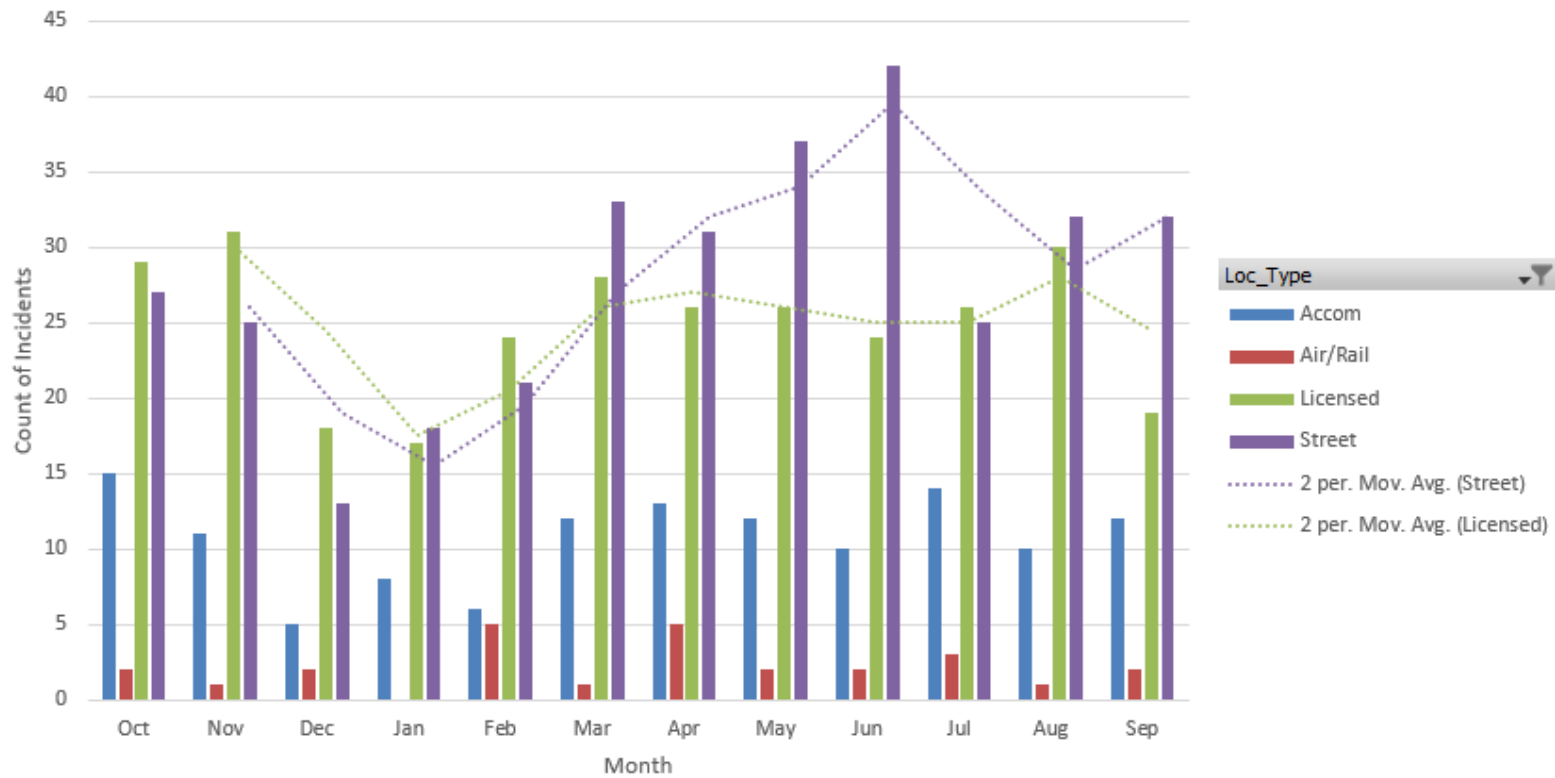
The data shows that most incidents are happening either in the streets or in Licensed premises. The maps confirm that the areas where incidents are happening is around areas with highest density of Licensed premises.

## All Disposal Codes

Disposal1 ▾ Loc\_Address ▾

Count of Disposal1

### Combined Disposal Codes for DWDA by Month 2023 & Location Type

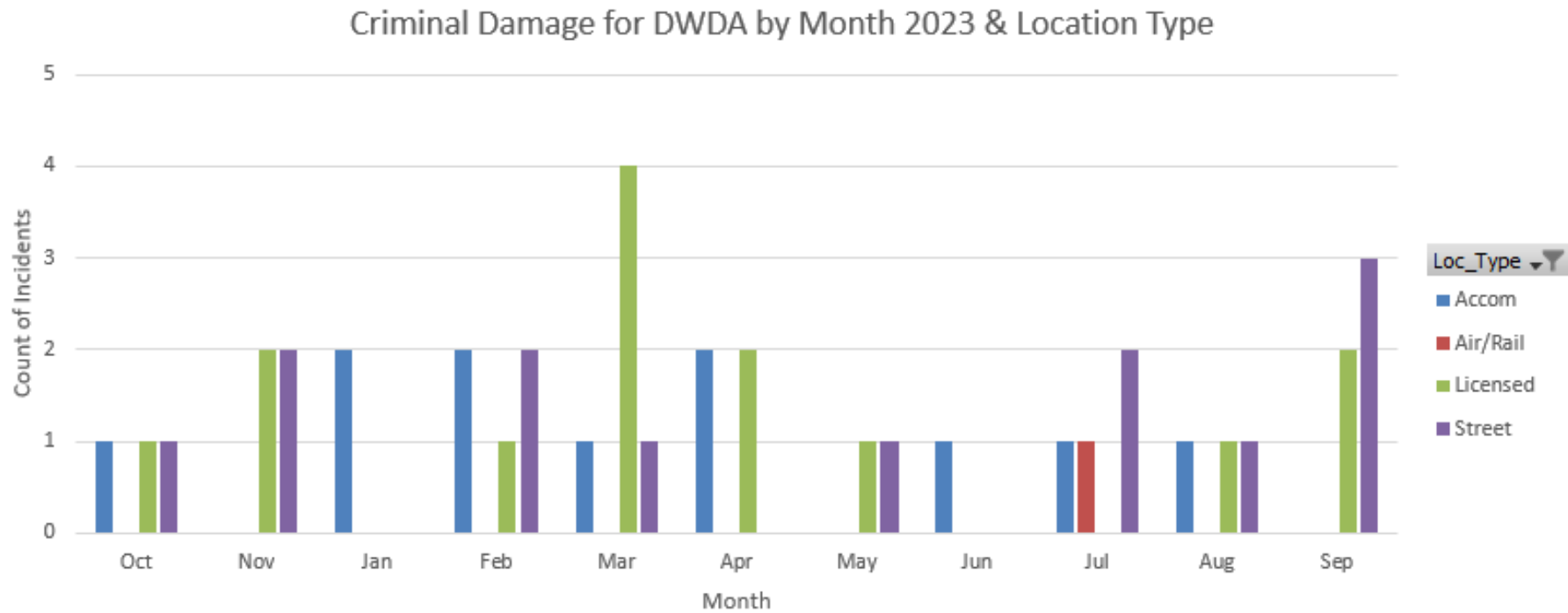


This chart shows that there is a general trend of increased incidents (all) in the street and a slight increase in incidents in licensed premises, over the year. This might be expected as the population increases over the summer months.

## Criminal Damage

Disposal1 ▼ Loc\_Address ▼

Count of Disposal1



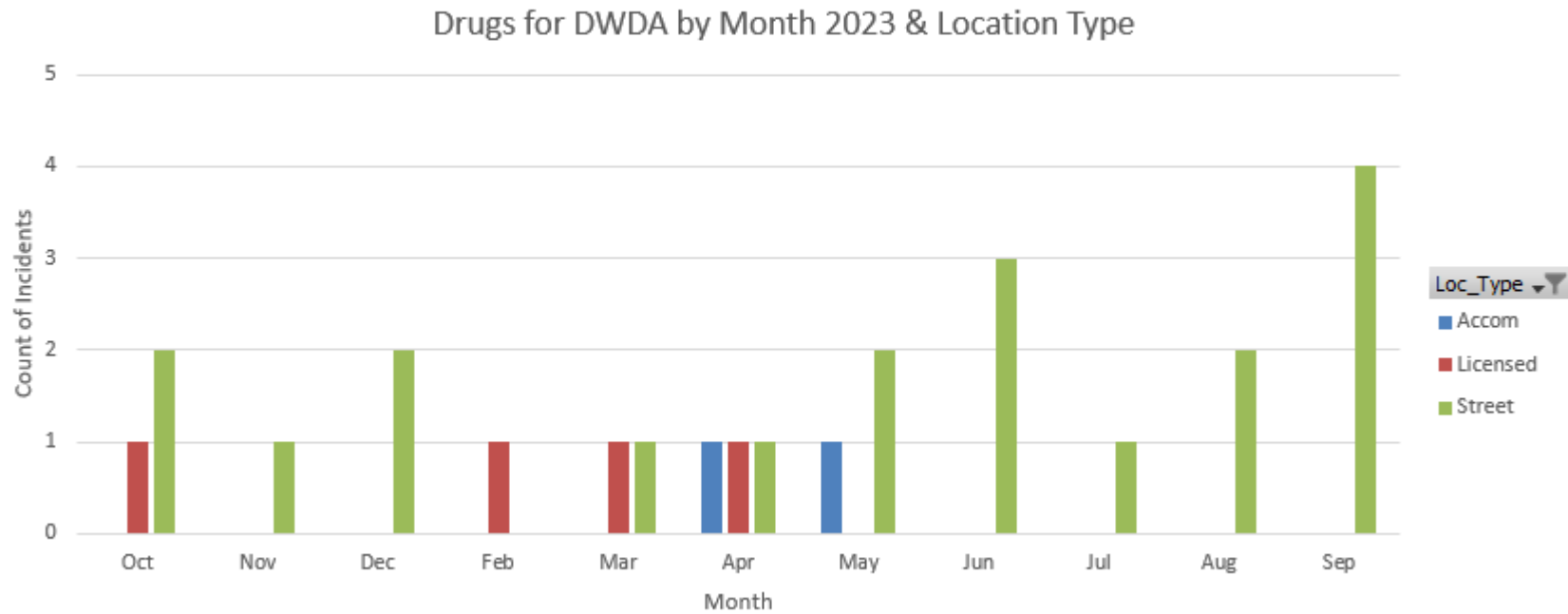
No clear trends are seen for criminal damage over the year, except for a spike in March in Licensed premises, and a possible spike now (Sept) in the street.



## Drugs

Disposal1 ▾ Loc\_Address ▾

Count of Disposal1

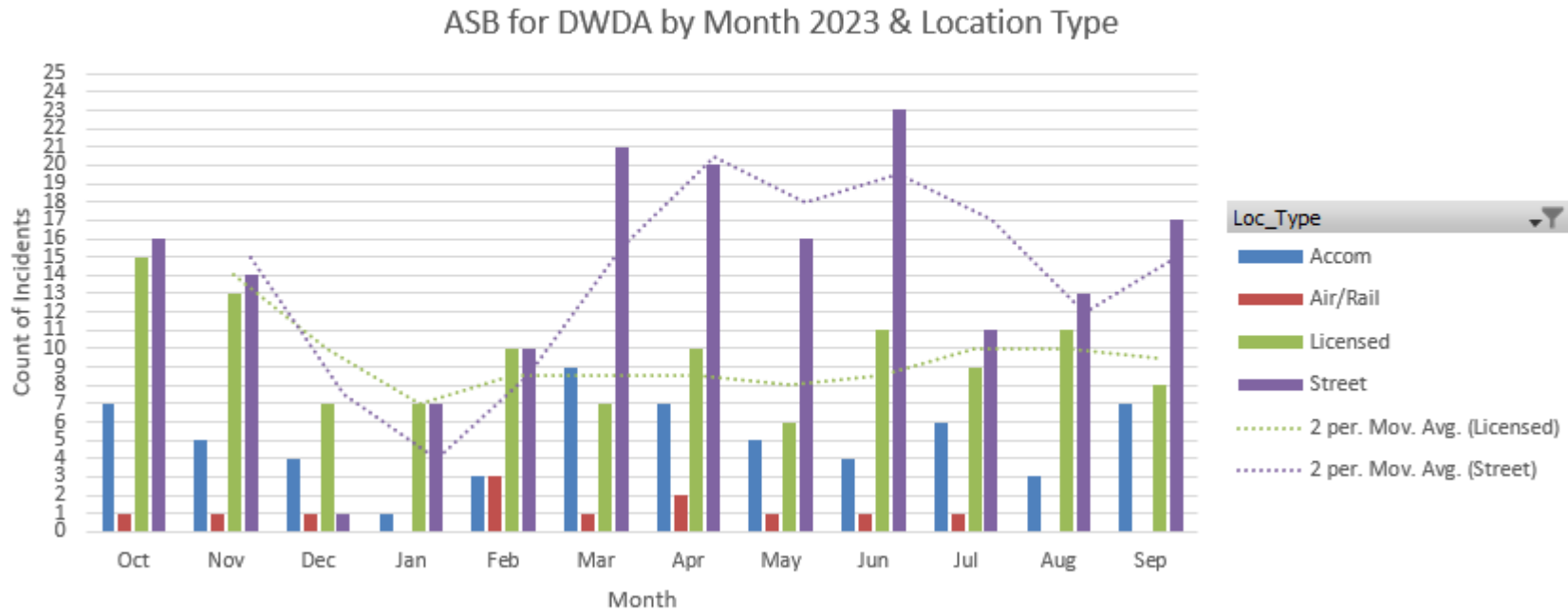


There is no clear trend for drug incidents, as these seem to be happening more on the street than in licensed premises.

ASB

Disposal1 ▼ Loc\_Address ▼

Count of Disposal1

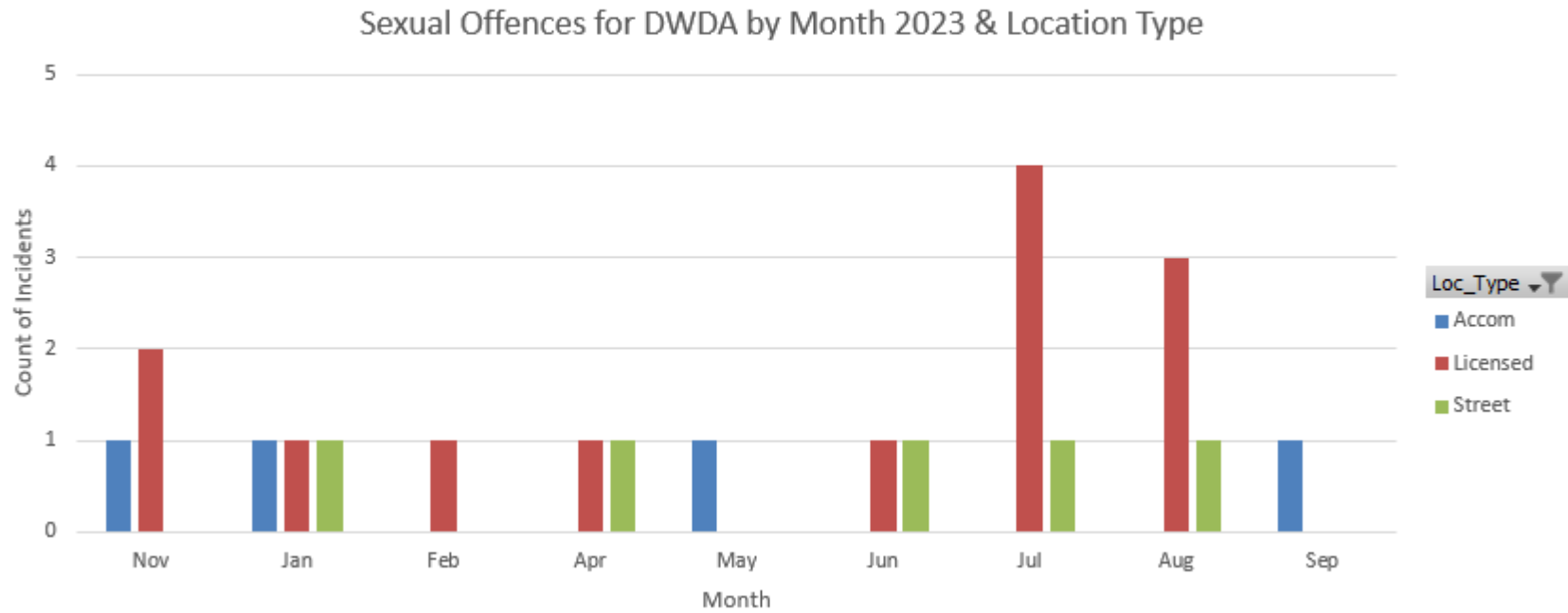


ASB seems to be increasing in the street (especially during the summer months) and although higher in Licensed premises at the end of 2022 (Oct/Nov) it has stayed fairly stable through the year.

## Sexual Offences

Disposal1 ▼ Loc\_Address ▼

Count of Disposal1



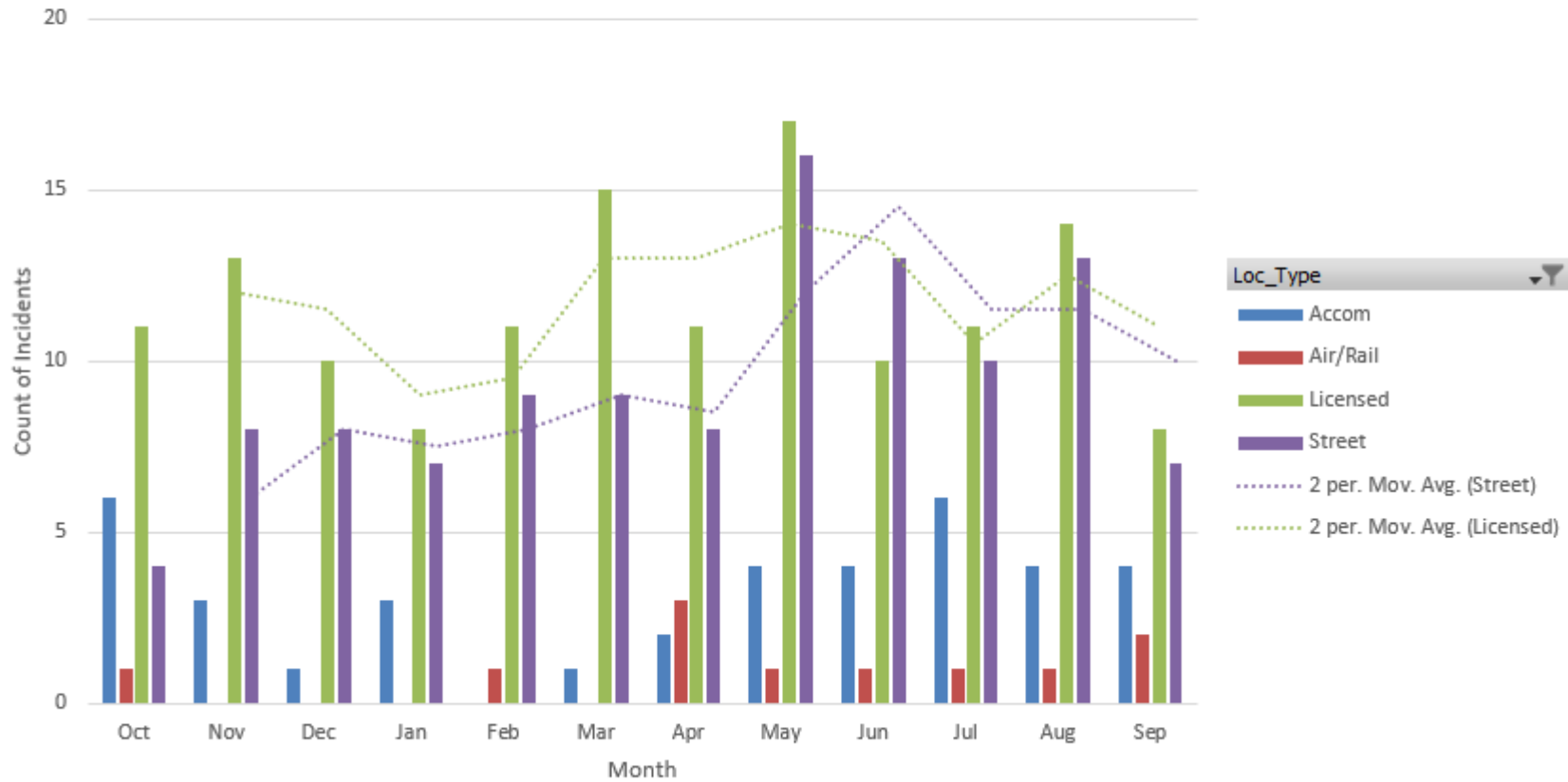
These are generally infrequent compared to other disposals but a spike of incidents can be seen for July & Aug in Licensed premises.

# Violence S20/47

Disposal1 ▾ Loc\_Address ▾

Count of Disposal1

## Violence S20/47 for DWDA by Month 2023 & Location Type



Violence incidents in all locations have been increasing since February – with a peak in May before the busy summer period. September may indicate a start of a drop but it is too early to say yet.

# Theft/Robbery

Disposal1 ▼ Loc\_Address ▼

Count of Disposal1

## Theft/Robbery for DWDA by Month 2023 & Location Type

